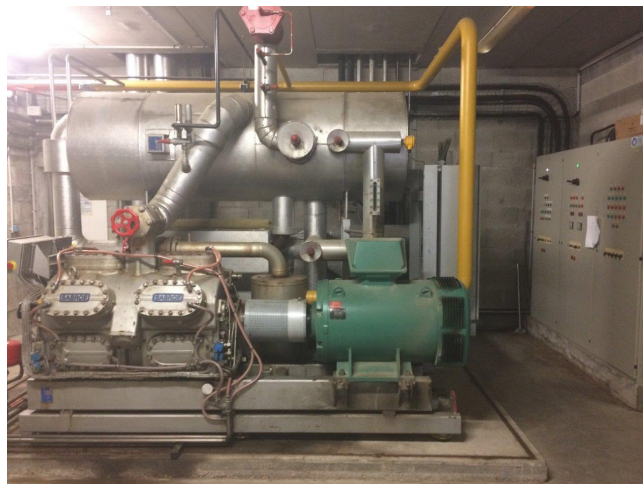


Sabroe SMC 112 L mk3

Specifications

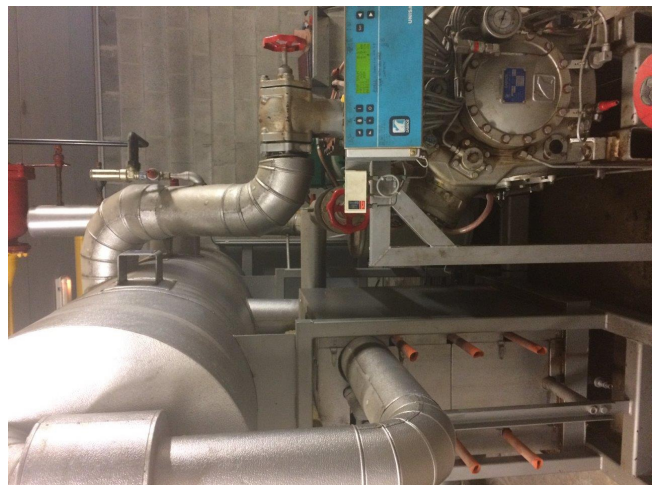
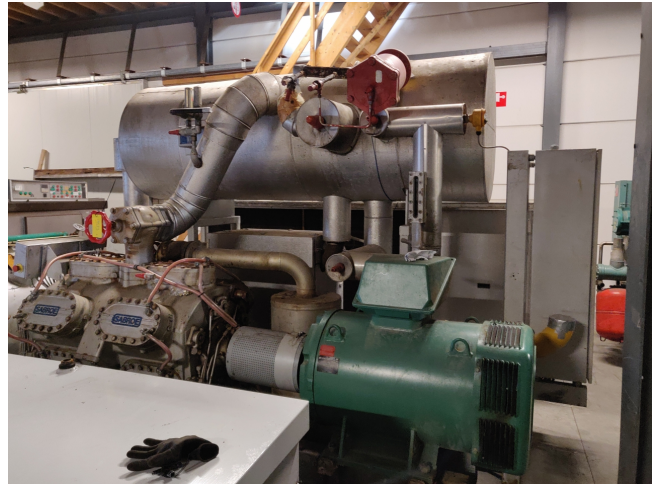
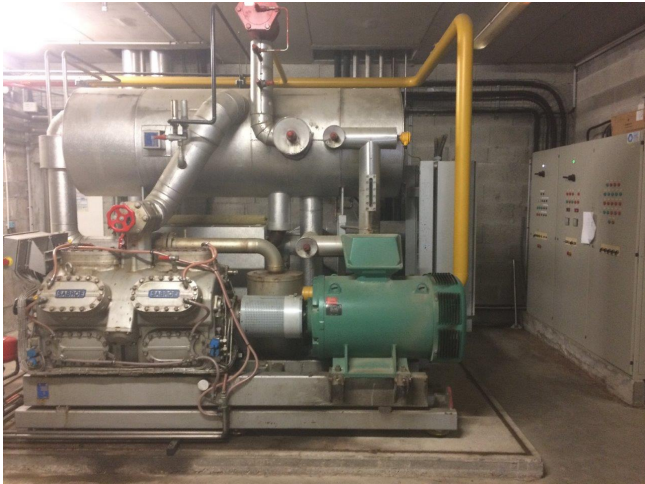
Brand	Sabroe
Tipo	SMC 112 L mk3
Product type	Air Cooled Chiller (split-unit)
Capacidad kW	667.6*
Capacity Tons	189,82
Refrigerante	NH 3 (ammonia)
Tipo de Refrigerante	R 717
Remarks	# capacity 667.6 kW is at 0°C/+40°C
Más Informacion?	Electromotor 160 kW with 1486 RPM
Stock	1

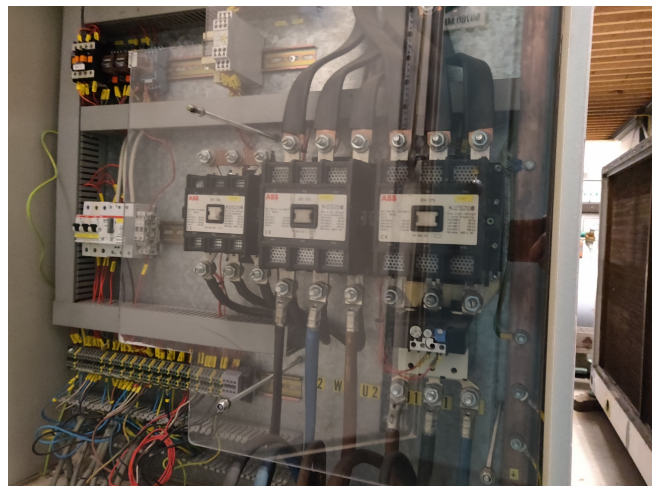


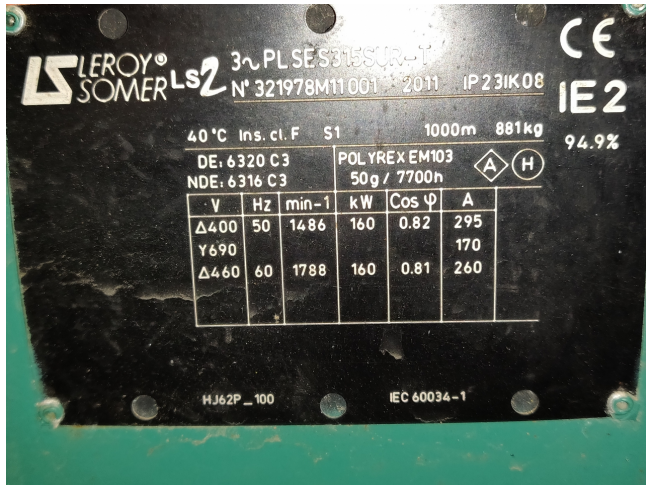
Description

Used Sabroe SMC 112 L mk3

Used well maintained Sabroe SMC 112 L piston compressor, with 160 kW electromotor 1486 RPM, 400V, 50 Hz, R717 refrigeration. Our capacity table is based on R717. For all the other specs (if available), see the picture of the manufacturer model plate or the attached pdf file. *Why choose for HOSBV? Were not only the largest used refrigeration specialist in Europe, but also, we deliver all equipment including an extensive test, warranty and industrial cleaning. *Optional we can also perform a new paint job and arrange the logistics.







Model	Number of cylinders	Swept volume at 1500 rpm m³/h	Swept volume at 1800 rpm m³/h	R717 *						Unit dimensions in mm			Weight excluding motor kg	Sound pressure level at 1500 rpm db(A)	Sound pressure level at 1800 rpm db(A)
				Nominal capacities in kW at 1500 rpm		Nominal capacities in kW at 1800 rpm		L	W	H					
				Single/high-stage	Booster	Single/high-stage	Booster								
SMC 104 S	4	226	271	127	195	35	153	235	42	2261-2865	1213	1229	1195	75	82
SMC 104 L	4	283	339	165	250	47	198	300	57	2261-2865	1213	1229	1215	80	83
SMC 104 E	4	339	N/A	203	306	58	N/A	N/A	N/A	2261-2865	1213	1229	1220	80	83
SMC 106 S	6	339	407	191	293	53	229	352	64	2286-2890	1267	1247	1380	81	83
SMC 106 L	6	424	509	247	375	71	297	450	85	2286-2890	1267	1247	1400	82	84
SMC 106 E	6	509	N/A	304	459	87	N/A	N/A	N/A	2286-2890	1267	1247	1410	82	84
SMC 108 S	8	452	543	255	391	71	306	469	85	2311-2915	1283	1247	1595	82	84
SMC 108 L	8	566	679	330	500	94	396	600	113	2311-2915	1283	1247	1630	83	85
SMC 108 E	8	679	N/A	406	612	116	N/A	N/A	N/A	2311-2915	1283	1247	1630	83	85
SMC 110 S	12	679	814	382	586	106	409	703	127	3279-3687	1475	1448	2255	83	85
SMC 110 L	12	848	1018	495	750	141	593	900	159	3279-3687	1475	1448	2280	83	86
SMC 110 E	12	1018	N/A	609	918	173	N/A	N/A	N/A	3279-3687	1475	1448	2330	83	86
SMC 116 S	16	905	1086	550	782	141	611	918	170	3529-3737	1536	1445	2505	84	86
SMC 116 L	16	1121	1357	689	1000	188	791	1200	226	3529-3737	1536	1445	2535	84	87
SMC 116 E	16	1357	N/A	812	1224	221	N/A	N/A	N/A	3529-3737	1536	1445	2590	84	87

* Other refrigerants available on request

Nominal capacities are based on:
1500 rpm at 50 Hz,
1800 rpm at 60 Hz or VSD.

For R717

2 K liquid subcooling and 0.5 K non-usable suction superheat.

Design pressure, HP side: 28 bar
Design pressure, LP side: 18 bar
Differential pressure: 25 bar.

Sound pressure levels in free field, over reflecting plane and one metre distance from the compressor block.

Min./max. speed	R717
SMC S-series	500-1800 rpm
SMC L-series	500-1800 rpm
SMC E-series	500-1500 rpm